
6 Pharmacy Practice Discussion Event – B

(3 speakers 20minutes + 5 for questions)

Judith Woolley & Gail Hewson (North Essex Partnership Foundation Trust)

Developing an In-house Pharmacy Service

Ray Lyons (Sussex Partnership Foundation NHS Trust)

Developing and Information & Monitoring Booklet for Lithium

Michele Sie (West London Mental Health Trust)

CMHP Portfolio

7. Pharmacy Research Event - C

(3 speakers 20minutes + 5 for questions)

Dave Branford (Derbyshire Mental Health Services NHS Trust)

User Perspectives on stopping & changing medicines

Ian Maidment (Kent and Medway NHS and Social Care Partnership Trust)

An exploratory study of the role of trust in medication management

Denise Taylor (University of Bath)

Delivery of Clozapine Services – benefits for service user?

17.00-17.45 **Satellite Meeting**
tbc

17.00-18.00 Exercise and Body Combat Class (Body Combat is a fun aerobic style class, non contact, like kick-boxing to music). No previous experience is needed and you pace yourself. Don't forget to pack your kit when coming to conference!

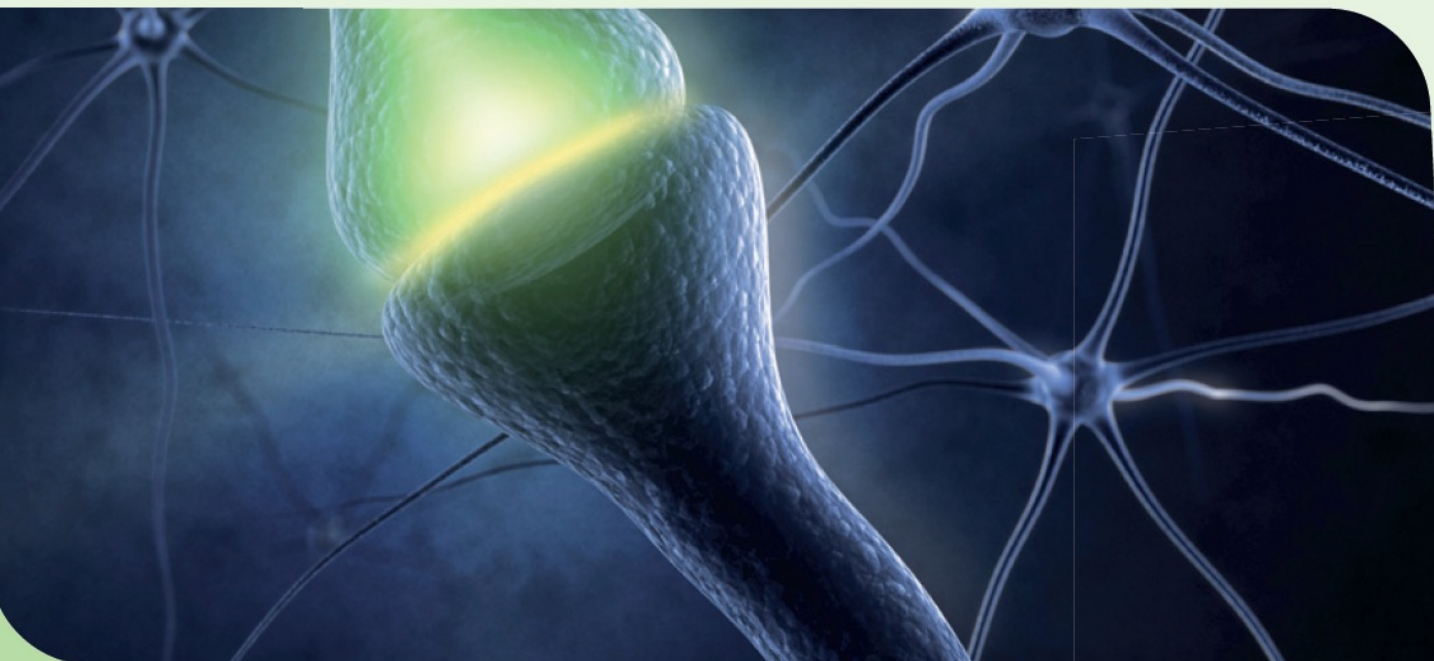
Evening

19.00 Drinks reception in the Rotunda

19.30 Evening conference dinner
(formal dress/black tie strongly encouraged i.e. let's keep the dinner something special!)

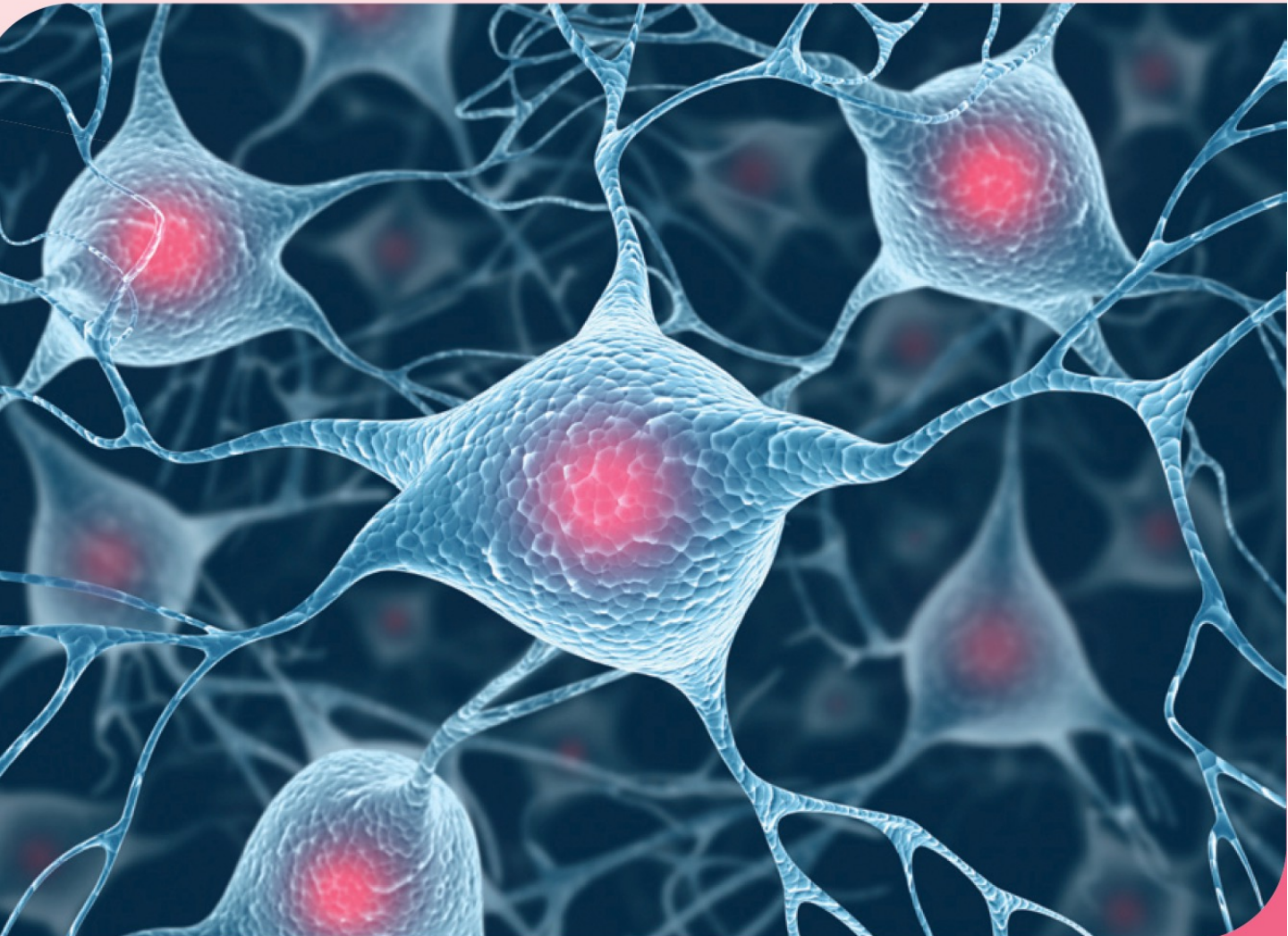
21.00 House Disco

As well as the usual, there will be poster presentations (for advice about posters see our website www.cmhp.org.uk) medical exhibition, pharmacist oral presentations, prizes, surprise events, CMHP AGM, Conference dinner, dancing, disco and much, much more - as ever! Don't forget about the swimming pool and gym.



Sunday 2nd October

- 9.00-9.30 Morning Worship led by Alan Pollard in the Aviary
Plenary Session (Paris Suite)
Current Issues in Mental Health
Chair: Dr. Patricia Oakley,
Teaching and Research Fellow, Kings College. London
- 9.30-10.15 Mental Health Issues in Eating Disorders –*Susan Ringwood, Chief Executive, Beat*
- 10.15-11.00 Current key issues within the DoH for Mental Health Pharmacy –*Dr. Patricia Oakley, Teaching and Research Fellow, Kings College. London*
- 11.00-11.20 Morning refreshments
- 11.20-12.00 **The Brett Hill Memorial Lecture: Mental health in young people** – *Rose Panumudipo, Young Minds, East Midlands*
- 12.00-12.45 **Capacity and the Limits of Consent** - *Professor Peter Bartlett, Professor of Mental Health Law, University of Nottingham*
- 12.45 Conference Summary and Farewell - *Stephen Guy, President of the CMHP*
- 13.00 Departure



Corporate Partners for 2011 are:

Eisai
Janssen-Cilag Ltd
Eli Lilly and Company Ltd
Lundbeck UK
Shire PLC

The College of Mental Health Pharmacy is a Registered Charity and aims to ensure the best treatment with medicines for people with mental health needs. The College believes that pharmaceutical care for people with mental health problems is improved by providing the pharmacy team members with high quality education and support about mental health conditions and their management.

The College delivers this by a combination of:

- Accreditation of specialist mental health pharmacists
- Delivery of high quality educational resources for pharmacists and pharmacy technicians
- Supporting choice for people by making available unbiased information on medicines
- Providing expert input to National Guidelines and health policy for medicines in mental health
- Supporting and disseminating research in the field of mental health pharmacy

The College runs a number of residential educational courses aimed at pharmacists and pharmacy technicians working in mental health. In addition, the College maintains close links with Aston University who offer a Postgraduate Certificate, Master of Science and Diploma in Mental Health Pharmacy. The Diploma forms the basis of the minimum educational requirements for pharmacists who wish to become fully accredited members of the College. Work is ongoing with the University of Bath on a distance learning programme for pharmacy technicians. They also provide a postgraduate unit on an introduction to mental health.

Companies wishing to take part in the Medical Exhibition please contact:

Graham Newton,
Principal Clinical Pharmacist -
Mental Health Services
Pharmacy Department
North Cheshire Hospitals NHS Trust
Halton General Hospital
Hospital Way
Runcorn
Cheshire
WA7 2DA

Email: graham.newton@whh.nhs.uk
Tel: 01928 - 753 400
Fax: 01928 - 753 191
Mobile: 07768 - 746 341

Conference Organiser

Denny Humphries,
CMHP Pharmacy Conference,
23, Danehurst Road,
Wallasey CH45 3JJ

Fax: +44 (0)151 638 3237
Email: denny.humphries@virgin.net

The CMHP thanks all our sponsors and exhibitors and all those involved in the plenary and workshop sessions for supporting the Annual Psychiatric Pharmacy Conference. Please complete and return feedback forms. CPD verification available from any CMHP council member.